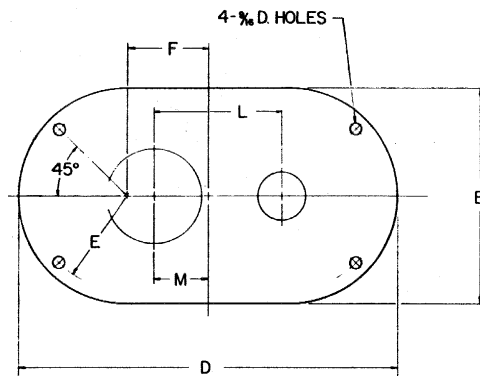
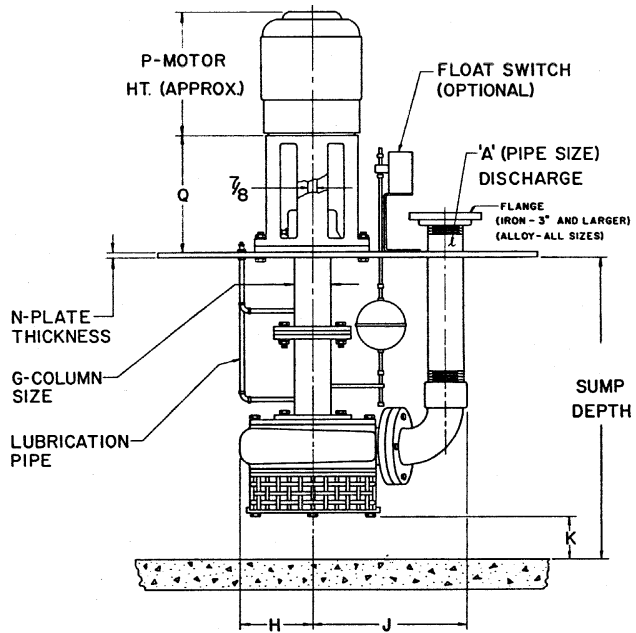


# VERTIFLO PUMP COMPANY Dimensions

## 800-S Basic Sump Pump

### PUMP DATA

SIZE	MODEL	A	B	C	D	E	F	G	H	J	K <sup>(2)</sup>	L	M	N
3x2 1/2 x 7	820-S	2 1/2 / 3	18	2' TO 20' IN 1' INCREMENTS	26	8	4	4	5 1/2	13 1/2 / 14 1/2	2 7/8	11 1/8 / 12	4 3/4	3 5/8
1 1/2 x 1 x 8	820-S	1 / 1 1/2	18		26	8	4	4	5 3/4	10 5/8 / 11 1/8	4 1/8	9 5/8 / 9 7/8	4 3/4	3 5/8
1 1/2 x 1 1/4 x 8	820-S	1 1/2 / 2	18		26	8	4	4	5 3/4	11 3/8 / 12	3 1/2	10 3/8 / 10 9/8	4 3/4	3 5/8
2 x 1 1/2 x 8	820-S	1 1/2 / 2	18		26	8	4	4	5 3/4	11 3/8 / 12	3 3/4	10 3/8 / 10 9/8	4 3/4	3 5/8
3 x 2 x 8	820-S	2 / 2 1/2	18		26	8	4	4	5 3/4	12 5/8 / 13 3/8	3 3/8	11 1/8 / 11 1/2	4 3/4	3 5/8
4 x 3 x 8	820-S	3 / 4	18		26	8	4	4	6	15 5/8 / 16 3/8	1 1/2	13 3/8 / 13 7/8	5 3/4	3 5/8
5 x 4 x 8	820-S	4 / 5	21		30	9 1/2	4 1/2	4	7	17 1/8 / 17 3/8	1 1/8	14 1/2 / 15	6 1/2	3 5/8
2 x 1 1/2 x 10	820-S	1 1/2 / 2	18		26	8	4	4	6 1/2	12 1/2 / 13	5	11 1/4 / 11 1/2	4 3/4	3 5/8
3 x 2 x 10	820-S	2 / 2 1/2	18		26	8	4	4	6 3/4	13 3/4 / 14 1/2	5	12 3/8 / 12 3/8	4 3/4	3 5/8
4 x 3 x 10	820-S	3 / 4	21		30	9 1/2	4 1/2	4	7	17 1/8 / 18	2 3/4	14 7/8 / 15 1/4	6 1/2	3 5/8
5 x 4 x 10	824-S	4 / 5	24		34	9 1/2	6 1/2	4	7 3/8	19 1/4 / 20 3/8	1 1/8	16 1/2 / 17	7	1 1/2
6 x 5 x 10	824-S	5 / 6	21		34	9 1/2	6 1/2	4	8	20 7/8 / 21 7/8	1 1/8	17 1/2 / 18	7	1 1/2
6 x 6 x 10		6 / 8	24		39	11	7 1/2	4	9 1/2	22 1/2 / 25	7/8	18 1/2 / 19 3/8	8	1 1/2
2 x 1 1/2 x 12	824-S	1 1/2 / 2	20		26	9	3	4	7 3/8	12 7/8 / 13 1/2	2 1/8	11 5/8 / 12	4 1/4	3 5/8
3 x 2 x 12	824-S	2 / 3	21		34	9 1/2	6 1/2	4	8	15 3/4 / 17 1/4	2	14 1/4 / 15	6	1 1/2
4 x 3 x 12	824-S	3 / 4	21		34	9 1/2	6 1/2	4	8	18 / 19	1 5/8	15 3/4 / 16 1/4	6	1 1/2



“K” dimension shown is for a pump built for a 2' through 6' pit depth. For each additional column section, subtract 3/8" from “K.”

### MOTOR DATA

FRAME	P	Q
56 C	10 7/16	12
143 TC	10	12
145 TC	10 7/16	12
182 - 184 TC	13 1/2	12
213 TC	15 1/2	12
215 TC	17	12
254 TC	20 1/8	12

FRAME	P	Q
256 TC	21 1/8	12
284 TC	22 3/8	13
286 TC	23 3/8	13
324 TC	24 3/4	13 1/2
326 TC	26 1/8	13 1/2
364 TC	26 1/2	16 5/8
365 TC	27 1/2	16 5/8

Not for construction unless certified, some dimensions may vary  $\pm 1/2"$ . Pump Construction: \_\_\_\_\_

CUSTOMER \_\_\_\_\_ CUSTOMER NO. \_\_\_\_\_  
 PROJECT \_\_\_\_\_ SERIAL NO. \_\_\_\_\_  
 ENGINEER \_\_\_\_\_ LOCATION \_\_\_\_\_  
 CONTRACTOR \_\_\_\_\_  
 PUMP Model Size Curve No. GPM Head SP. GR. @Temp. Pump Length Plate  
 DATA \_\_\_\_\_  
 MOTOR Mfr. HP RPM Volt-Phase-Cycle Frame ENC. Furnished by Mounted by  
 DATA \_\_\_\_\_  
 Shop Order \_\_\_\_\_ Certified by \_\_\_\_\_ Date \_\_\_\_\_