

VERTIFLO

The Vertical Pump Specialists

PUMPS FOR INDUSTRY

CONTENTS:

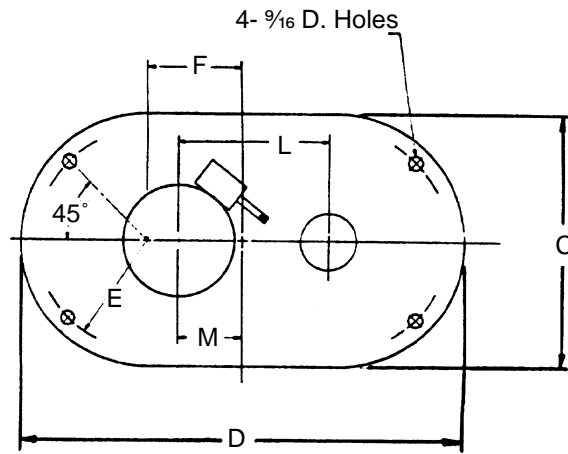
Introduction & User List
Product Overview
Vertical Process Pumps Series 600
Vertical Sewage Pumps Series 700
Vertical Sump Pumps Series 800
Vertical Vortex Pumps Series 900
Vertical Cantilever Pumps Series 1100 and 1200
Horizontal End Suction Pumps-Centrifugal Series 1300 and 1400
Horizontal End Suction Pumps-Vortex Series 1500 and 1600
Horizontal Self-priming Pumps- Centrifugal Series 2100
Engineering Sample Specifications

VERIFLO PUMP COMPANY Dimensions

900 Series Basic Oval

PUMP DATA

SIZE	MODEL	A	B	C	D	E	F	H	J	K	L	M	N	
1½x1½x10	920	1½	2 TO 20" IN 1" INCREMENTS	18	26	8	4	7½	13½	5¾	13¼	6½	¾	
		2							14		13¾			
2x2x10	920	2		21	30	9½	4½	7½	16½	17¾	3¼	14½	6½	¾
		3										15¾		
3x3x10	924	3		21	34	9	4½	7½	19	20¾	13¾	16¾	7	½
		4										17¾		
4x4x10	924	4		21	34	9½	4½	7¾	21½	23½	11¾	18¾	7	½
		6										19½		
8x6x10	924	6		24	39	11	7	8¾	23¾	26¾	8¾	20	8	½
		8										21¼		
4x4x13	924	4		24	39	11	7½	9¾	21½	24	10¾	18¾	8	½
		6										20		

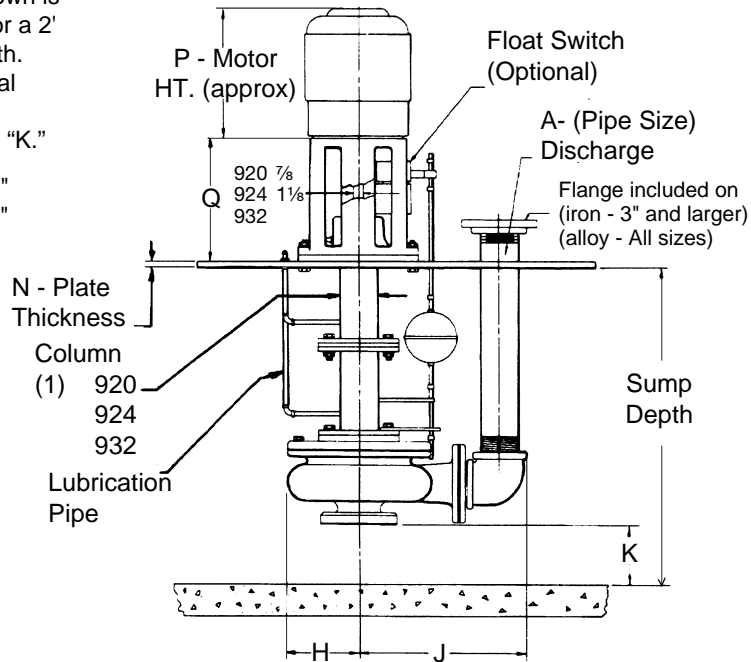


MOTOR DATA

FRAME	P	Q
56 C	10 ⁷ / ₁₆	12
143 TC	10	12
145 TC	10 ⁷ / ₁₆	12
182 - 184 TC	13 ¹ / ₂	12
213 TC	15 ¹ / ₂	12
215 TC	17	12
254 TC	20 ³ / ₈	12
256 TC	21 ³ / ₈	12
284 TC	22 ³ / ₈	13
286 TC	23 ³ / ₈	13
324 TC	24 ³ / ₄	13 ¹ / ₂
326 TC	26 ¹ / ₈	13 ¹ / ₂
364 TC	26 ¹ / ₂	16 ⁵ / ₈
365 TC	27 ¹ / ₂	16 ⁵ / ₈

"K" dimension shown is for a pump built for a 2' through 6' pit depth. For each additional column section, subtract 3/8" from "K."

(1) 920 + 924 = 4"
932 = 6"



Not for construction unless certified, some dimensions may vary ± 1/2". Pump Construction: _____

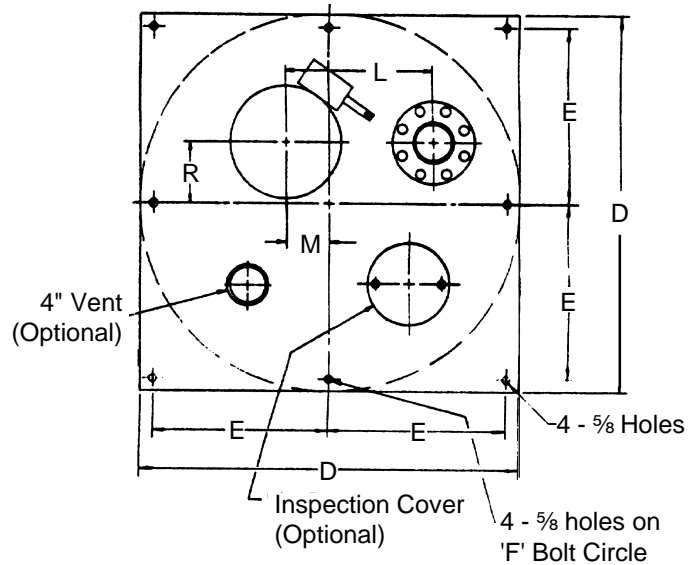
CUSTOMER _____ CUSTOMER NO. _____
 PROJECT _____ SERIAL NO. _____
 ENGINEER _____ LOCATION _____
 CONTRACTOR _____
 PUMP Model Size Curve No. GPM Head SP. GR. @Temp. Pump Length Plate
 DATA _____
 MOTOR Mfgr. HP RPM Volt-Phase-Cycle Frame ENC. Furnished by Mounted by
 DATA _____
 Shop Order _____ Certified by _____ Date _____

VERTIFLO PUMP COMPANY Dimensions

900 Series Simplex

PUMP DATA

SIZE	MODEL	A	B	C	D	E	F	H	J	K	L	M	N
1½x1½x10	920	1½	24	28	13	26	7½	13⅝	5⅝	13¼	6½	¾	
		2											
2x2x10	920	2	30	34	16	32	7½	16⅝	3¼	14½	6⅝	¾	
		3											
3x3x10	924	3	30	34	16	32	7½	19	13⅝	16¾	6⅝	¾	
		4											
4x4x10	924	4	36	40	19	38	7¾	21⅝	11¾	18⅝	7¼	½	
		6											
8x6x10	932	6	36	40	19	38	8¾	23⅝	8⅝	20	7¼	⅝	
		8											
3x3x13	924	3	36	40	19	38	9¾	20¼	12⅝	18	7¼	⅝	
		4											
4x4x13	932	4	36	40	19	38	9¾	21⅝	10¾	18⅝	7¼	⅝	
		6											

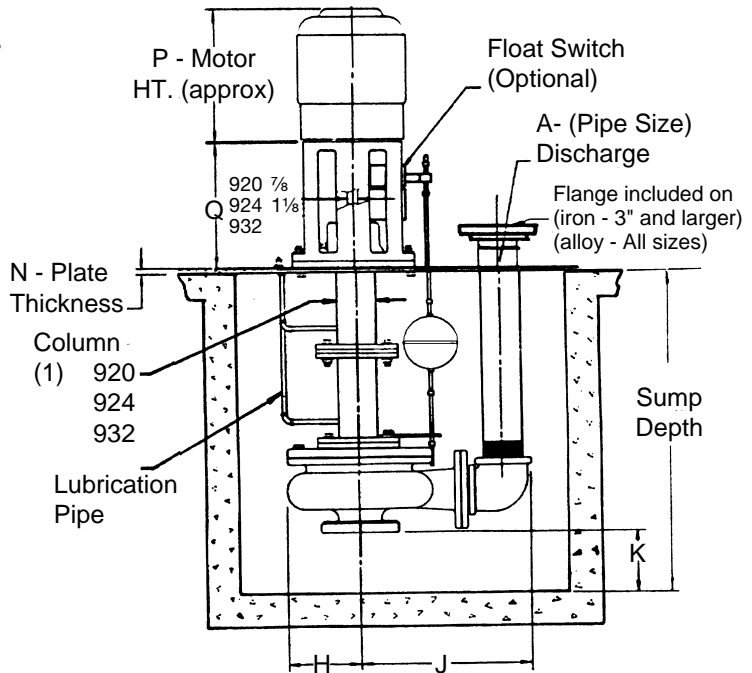


MOTOR DATA

FRAME	P	Q
56 C	10 ⁷ / ₁₆	20 ¹ / ₂
143 TC	10	20 ¹ / ₂
145 TC	10 ⁷ / ₁₆	20 ¹ / ₂
182 - 184 TC	13 ¹ / ₂	20 ¹ / ₂
213 TC	15 ¹ / ₂	20 ¹ / ₂
215 TC	17	20 ¹ / ₂
254 TC	20 ¹ / ₈	20 ¹ / ₂
256 TC	21 ⁷ / ₈	20 ¹ / ₂
284 TC	22 ³ / ₈	21 ¹ / ₄
286 TC	23 ⁷ / ₈	21 ¹ / ₄
324 TC	24 ³ / ₄	21 ¹ / ₄
326 TC	26 ¹ / ₈	21 ¹ / ₄
364 TC	26 ¹ / ₂	22 ³ / ₈
365 TC	27 ¹ / ₂	22 ³ / ₈

"K" dimension shown is for a pump built for a 2' through 6' pit depth. For each additional column section, subtract 3/8" from "K."

(1) 920 + 924 = 4"
932 = 6"



Not for construction unless certified, some dimensions may vary ± 1/2". Pump Construction: _____

900

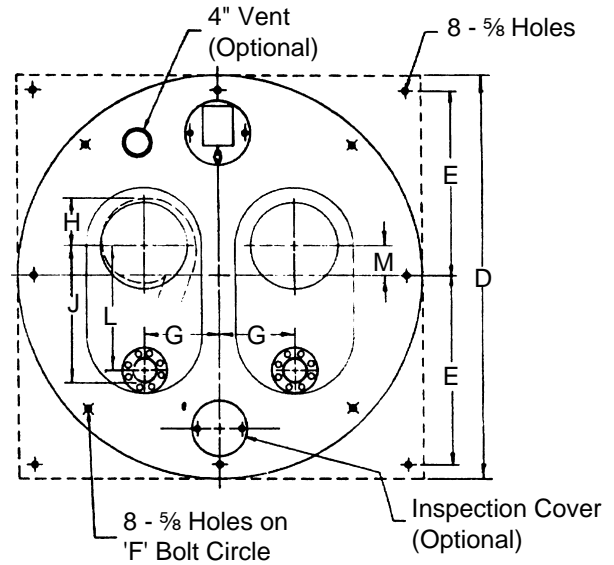
CUSTOMER _____ CUSTOMER NO. _____
 PROJECT _____ SERIAL NO. _____
 ENGINEER _____ LOCATION _____
 CONTRACTOR _____
 PUMP Model _____ Size _____ Curve No. _____ GPM _____ Head _____ SP. GR. @Temp. _____ Pump Length _____ Plate
 DATA _____
 MOTOR Mfg. _____ HP _____ RPM _____ Volt-Phase-Cycle _____ Frame ENC. _____ Furnished by _____ Mounted by
 DATA _____
 Shop Order _____ Certified by _____ Date _____

VERTIFLO PUMP COMPANY Dimensions

900 Series Duplex

PUMP DATA

SIZE	MODEL	A	B	C	D	E	F	H	J	K	L	M	N	G	
1½x1½x10	920	1½	2	2' TO 20' IN 1' INCREMENTS	48	54	25½	51	7½	13¾	5¾	13¼	6½	½	11
		2			54	60	28½	57	7½	16½	3¼	14½	6½	½	11
3	60	66	31½		63	7½	19	13¾	16¾	7	½	11			
4	60	66	31½		63	7¾	21½	11¾	18¾	8	½	12½			
6	60	66	31½		63	8¾	23¾	8¾	20	8	5/8	12½			
8	60	66	31½		63	9¾	21½	10¾	18¾	8	5/8	12½			
2x2x10	920 924	2	3	2' TO 20' IN 1' INCREMENTS	54	60	28½	57	7½	16½	3¼	14½	6½	½	11
		3			60	66	31½	63	7½	19	13¾	16¾	7	½	11
4	60	66	31½		63	7¾	21½	11¾	18¾	8	½	12½			
6	60	66	31½		63	8¾	23¾	8¾	20	8	5/8	12½			
8	60	66	31½		63	9¾	21½	10¾	18¾	8	5/8	12½			
10	60	66	31½		63	10¾	21½	10¾	18¾	8	5/8	12½			
3x3x10	924	3	4	2' TO 20' IN 1' INCREMENTS	60	66	31½	63	7½	19	13¾	16¾	7	½	11
		4			60	66	31½	63	7¾	21½	11¾	18¾	8	½	12½
6	60	66	31½		63	8¾	23¾	8¾	20	8	5/8	12½			
8	60	66	31½		63	9¾	21½	10¾	18¾	8	5/8	12½			
10	60	66	31½		63	10¾	21½	10¾	18¾	8	5/8	12½			
12	60	66	31½		63	11¾	21½	10¾	18¾	8	5/8	12½			
4x4x10	924	4	6	2' TO 20' IN 1' INCREMENTS	60	66	31½	63	7¾	21½	11¾	18¾	8	½	12½
		6			60	66	31½	63	8¾	23¾	8¾	20	8	5/8	12½
8	60	66	31½		63	9¾	21½	10¾	18¾	8	5/8	12½			
10	60	66	31½		63	10¾	21½	10¾	18¾	8	5/8	12½			
12	60	66	31½		63	11¾	21½	10¾	18¾	8	5/8	12½			
14	60	66	31½		63	12¾	21½	10¾	18¾	8	5/8	12½			
8x6x10	924 932	6	8	2' TO 20' IN 1' INCREMENTS	60	66	31½	63	8¾	23¾	8¾	20	8	5/8	12½
		8			60	66	31½	63	9¾	21½	10¾	18¾	8	5/8	12½
10	60	66	31½		63	10¾	21½	10¾	18¾	8	5/8	12½			
12	60	66	31½		63	11¾	21½	10¾	18¾	8	5/8	12½			
14	60	66	31½		63	12¾	21½	10¾	18¾	8	5/8	12½			
16	60	66	31½		63	13¾	21½	10¾	18¾	8	5/8	12½			
4x4x13	924 932	4	6	2' TO 20' IN 1' INCREMENTS	60	66	31½	63	9¾	21½	10¾	18¾	8	5/8	12½
		6			60	66	31½	63	10¾	21½	10¾	18¾	8	5/8	12½

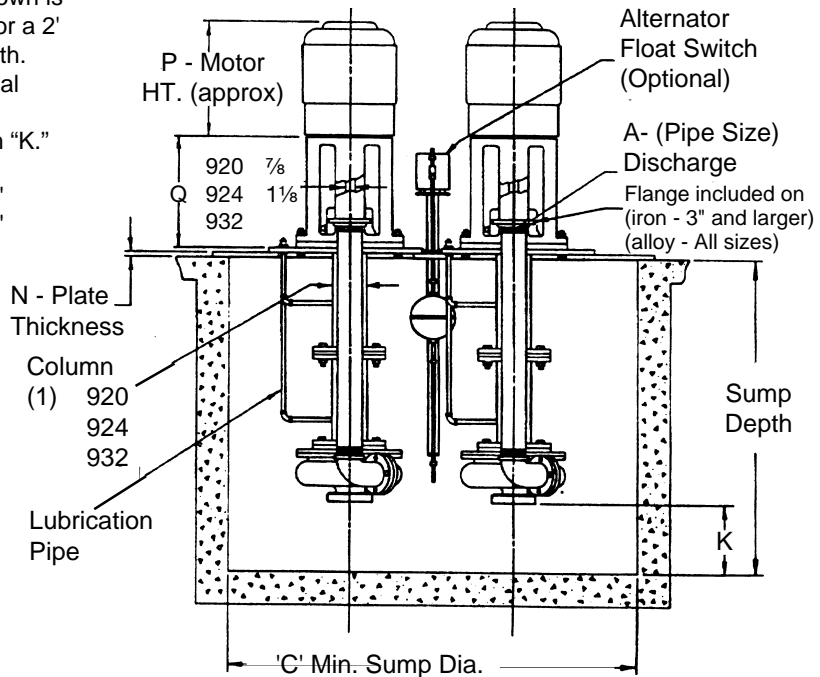


MOTOR DATA

FRAME	P	Q
56 C	10 ⁷ / ₁₆	12
143 TC	10	12
145 TC	10 ⁷ / ₁₆	12
182 - 184 TC	13½	12
213 TC	15½	12
215 TC	17	12
254 TC	20 ⁷ / ₈	12
256 TC	21 ⁷ / ₈	12
284 TC	22 ³ / ₈	13
286 TC	23 ⁷ / ₈	13
324 TC	24 ³ / ₄	13½
326 TC	26 ¹ / ₈	13½
364 TC	26½	16 ⁵ / ₈
365 TC	27½	16 ⁵ / ₈

"K" dimension shown is for a pump built for a 2' through 6' pit depth. For each additional column section, subtract 3/8" from "K."

(1) 920 + 924 = 4"
932 = 6"



Not for construction unless certified, some dimensions may vary ± 1/2". Pump Construction: _____

CUSTOMER _____ CUSTOMER NO. _____
 PROJECT _____ SERIAL NO. _____
 ENGINEER _____ LOCATION _____
 CONTRACTOR _____
 PUMP Model _____ Size _____ Curve No. _____ GPM _____ Head _____ SP. GR. @Temp. _____ Pump Length _____ Plate DATA _____
 MOTOR Mfgr. _____ HP _____ RPM _____ Volt-Phase-Cycle _____ Frame ENC. _____ Furnished by _____ Mounted by DATA _____
 Shop Order _____ Certified by _____ Date _____