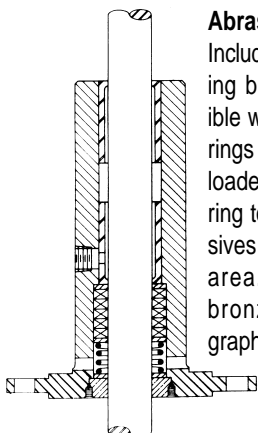
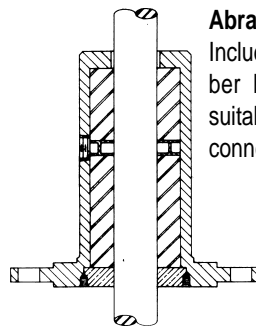


Part Description	Standard Fitted	316 Stainless Fitted	All 316 Stainless	All Alloy 20
Motor Support, Thrust Bearing Housing	Cast Iron Class 30	Cast Iron Class 30	Cast Iron Class 30	Cast Iron Class 30
Shaft	Stainless Steel AISI-416	Stainless Steel AISI-316	Stainless Steel AISI-316	Alloy 20
Column	Steel ASTM-A53	Steel ASTM-A53	Stainless Steel AISI-316	Alloy 20
Bearing Housing	Cast Iron Class 30	Cast Iron Class 30	Stainless Steel AISI-316	Alloy 20
Guide Bearings	Bronze SAE 660	Bronze SAE 660	Graphite	Graphite
Casing Adaptor	Cast Iron Class 30	Cast Iron Class 30	Stainless Steel AISI-316	Alloy 20
Impeller	Cast Iron Class 30	Stainless Steel AISI-316	Stainless Steel AISI-316	Alloy 20
Impeller Trim	Stainless Steel AISI-316	Stainless Steel AISI-316	Stainless Steel AISI-316	Alloy 20
Casing	Cast Iron Class 30	Cast Iron Class 30	Stainless Steel AISI-316	Alloy 20
Gasket	Vellumoid	Vellumoid	NA 700	NA 700
Strainer Plate	Cast Iron Class 30	Cast Iron Class 30	Stainless Steel AISI-316	Alloy 20
Strainer Basket	Stainless Steel AISI-304	Stainless Steel AISI-304	Stainless Steel AISI-316	Alloy 20
Discharge Elbow	Cast Iron AISI-B164	Cast Iron AISI-B164	Stainless Steel AISI-316	Alloy 20
Discharge Pipe	Steel ASTM-A53	Steel ASTM-A53	Stainless Steel AISI-316	Alloy 20
Cover Plate	Steel HRS	Steel HRS	Steel HRS	Steel HRS
Bearing Adaptor	Steel AISI-12L14	Steel AISI-12L14	Steel AISI-12L14	Steel AISI-12L14
Adjusting Nut	Steel ASTM-307	Steel ASTM-307	Steel ASTM-307	Steel ASTM-307
Lip Seal	Nitrile	Nitrile	Nitrile	Nitrile

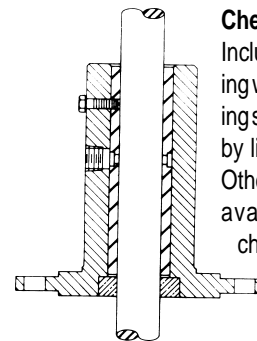
Alternate Line Shaft Bearing Assemblies



Abrasive Service - 1
Includes (2) guide bearing bushings compatible with the liquid, (5) rings of packing spring loaded and a choker ring to eliminate abrasives from the bearing area. Optional are bronze or carbon graphite.



Abrasive Service - 2
Includes (2) cutless rubber bearing bushings suitable for water flush connection.



Chemical Service
Includes (1) Teflon* bearing w/stainless steel locking screws and lubricated by liquid being pumped. Other bearing materials available for special chemical services.

NOTE: Bearing assemblies shown are typical for most pumping services. Unusual or severe services may necessitate changes in assembly design.

*E.I DuPont registered TM