

VERTIFLO

The Vertical Pump Specialists

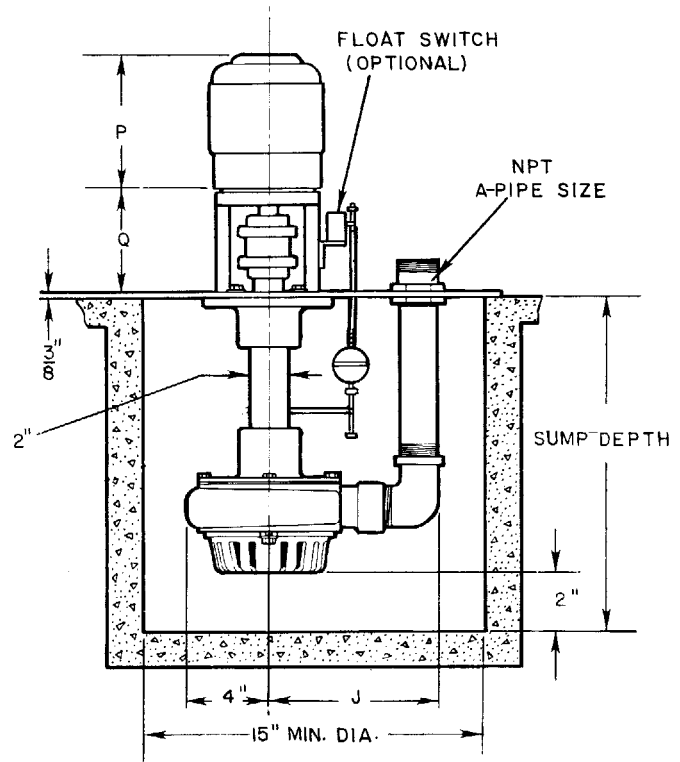
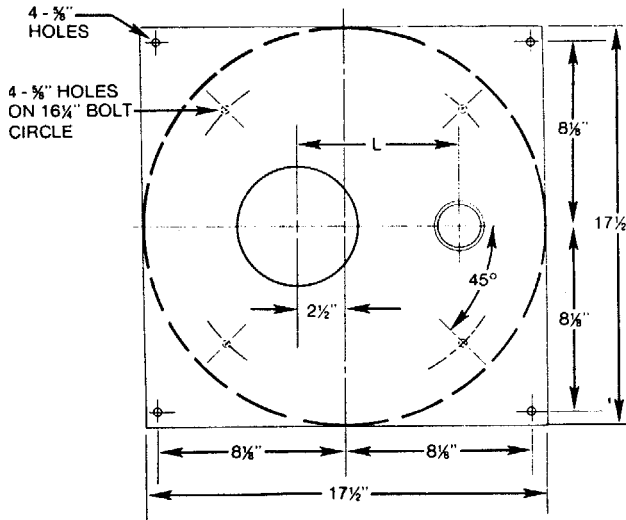
PUMPS FOR INDUSTRY

CONTENTS:

Introduction & User List
Product Overview
Vertical Process Pumps Series 600
Vertical Sewage Pumps Series 700
Vertical Sump Pumps Series 800
Vertical Vortex Pumps Series 900
Vertical Cantilever Pumps Series 1100 and 1200
Horizontal End Suction Pumps-Centrifugal Series 1300 and 1400
Horizontal End Suction Pumps-Vortex Series 1500 and 1600
Horizontal Self-priming Pumps- Centrifugal Series 2100
Engineering Sample Specifications

VERIFLO PUMP COMPANY Dimensions

814 Simplex Sump Pump



PUMP DATA

SIZE	A	C	J	L
1 1/2 x 1 x 6	1	2 to 7 Feet*	7 1/2	6 1/2
	1 1/2		8 1/4	7
2 x 1 1/2 x 6	1 1/2		8 1/2	7 1/4
	2		9 1/4	7 3/4

MOTOR DATA

FRAME	P	Q
56 C	12 1/8	5 5/8
143TC - 145TC	12 1/4	5 5/8
182TC - 184TC	15 7/16	6 3/8
213TC - 215TC	16 11/16	6 3/8

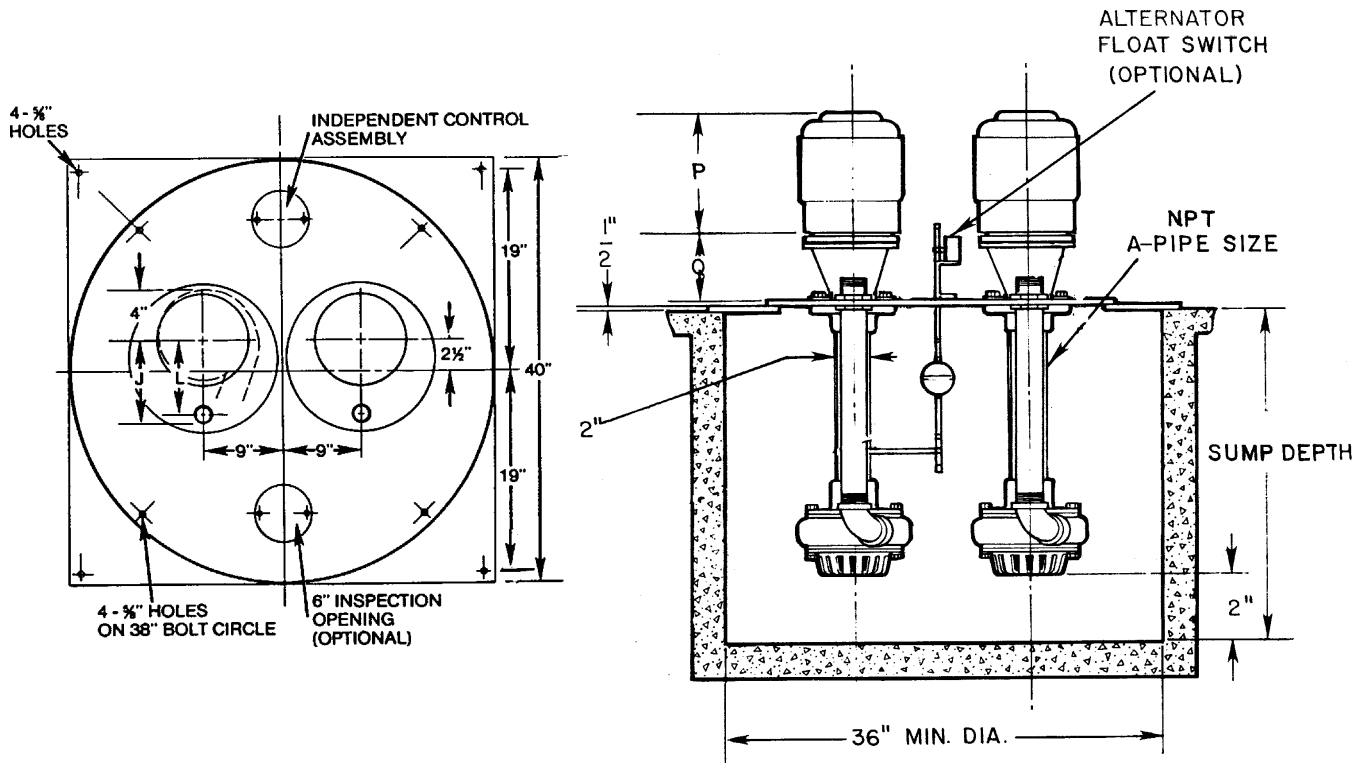
* Sump Depth is in 1 Foot Increments

Not for construction unless certified, some dimensions may vary $\pm 1/2"$. Pump Construction: _____

CUSTOMER _____ CUSTOMER NO. _____
 PROJECT _____ SERIAL NO. _____
 ENGINEER _____ LOCATION _____
 CONTRACTOR _____
 Pump Model _____ Size _____ Curve No. _____ GPM _____ Head _____ SP. GR. @Temp. _____ Pump Length _____ Plate
 DATA _____
 MOTOR Mfg. _____ HP _____ RPM _____ Volt-Phase-Cycle _____ Frame ENC. _____ Furnished by _____ Mounted by
 DATA _____
 Shop Order _____ Certified by _____ Date _____

VERIFLO PUMP COMPANY Dimensions

814 Duplex Sump Pump



PUMP DATA

SIZE	A	C	J	L
1 1/2 x 1 x 6	1	2 to 7 Feet*	7 1/2	6 1/2
	1 1/2		8 1/4	7
2 x 1 1/2 x 6	1 1/2		8 1/2	7 1/4
	2		9 1/4	7 3/4

MOTOR DATA

FRAME	P	Q
56 C	12 1/8	5 5/8
143TC - 145TC	12 1/4	5 5/8
182TC - 184TC	15 7/16	6 3/8
213TC - 215TC	16 11/16	6 3/8

* Sump Depth is in 1 Foot Increments

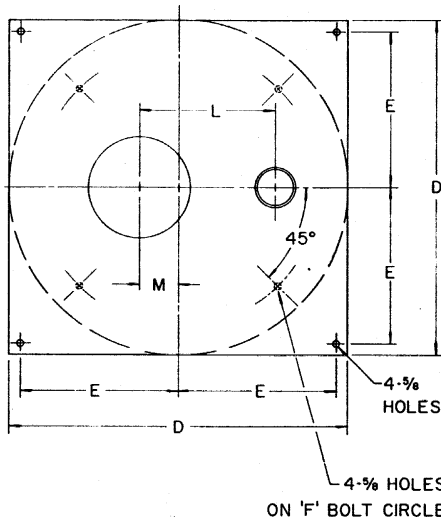
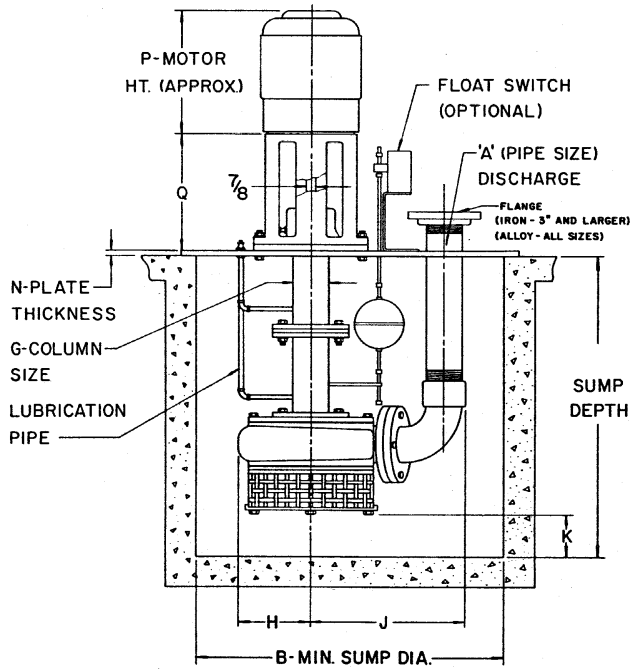
Not for construction unless certified, some dimensions may vary ± 1/2". Pump Construction: _____

CUSTOMER _____ CUSTOMER NO. _____
 PROJECT _____ SERIAL NO. _____
 ENGINEER _____ LOCATION _____
 CONTRACTOR _____
 Pump Model Size Curve No. GPM Head SP. GR. @Temp. Pump Length Plate
 DATA _____
 MOTOR Mfg. HP RPM Volt-Phase-Cycle Frame ENC. Furnished by Mounted by
 DATA _____
 Shop Order _____ Certified by _____ Date _____

VERTIFLO PUMP COMPANY Dimensions

800-S Simplex Sump Pump

PUMP DATA



SIZE	MODEL	A	B	C	D	E	F	G	H	J	K ⁽²⁾	L	M	N						
3x2 1/2x7	820-S	2 1/2	24	2 TO 26' IN 1' INCREMENTS							13 1/2	11 1/2	4 1/4	3/8						
		3									14 1/4	12								
1 1/2x1x8	820-S	1	24								28	13	26	4	5 1/2	10 5/8	4 1/8	9 5/8	4 1/4	3/8
		1 1/2									11 1/8	9 7/8								
1 1/2x1 1/4x8	820-S	1 1/2	24								28	13	26	4	5 3/4	11 1/8	3 1/8	10	4 1/4	3/8
		2									12	10 3/8								
2x1 1/2x8	820-S	1 1/2	24								28	13	26	4	5 3/4	11 1/8	3 3/4	10	4 1/4	3/8
		2									12	10 3/8								
3x2x8	820-S	2 1/2	24								28	13	26	4	5 5/8	12 5/8	3 3/8	11 1/8	4 1/4	3/8
		3									13 3/8	11 1/2								
4x3x8	820-S	4	24								28	13	26	4	6	15 5/8	1 1/2	13 3/8	4 1/4	3/8
		4									16 5/8	13 1/2								
5x4x8	820-S	5	30								34	16	32	4	7	17 1/8	1 1/8	15	6 3/8	3/8
		5									17 1/8	14 1/2								
2x1 1/2x10	820-S	1 1/2	34								28	13	26	4	6 1/2	12 1/2		11 1/4	4 1/4	3/8
		2									13	5	11 1/2							
3x2x10	820-S	2 1/2	24								28	13	26	4	6 5/8	13 3/4	5	12 5/8	4 1/4	3/8
		3									14 1/2	12 5/8								
4x3x10	820-S	4	30								34	16	32	4	7	17 1/8	2 3/8	15 1/4	6 3/8	3/8
		4									17 1/8	14 3/4								
5x4x10	824-S	5	30	34	16	32	4	7 3/8	19 1/8	1 1/8	17	6 3/8	3/8							
		5		20 3/8	16 1/2															
6x5x10	824-S	6	36	40	19	38	4	8	20 7/8	1 1/8	17 1/2	6 1/4	1/2							
		6		21 7/8	18															
6x6x10	824-S	6	36	40	19	38	4	8 1/2	22 1/2		18 1/2	7 1/4	1/2							
		6		22 1/2	19 3/8															
6x6x10A	824-S	8	36	40	19	38	4	9 1/2	25	7/8	19 3/8	7 1/4	1/2							
		8		25	19 3/8															
2x1 1/2x12	824-S	1 1/2	24	28	13	26	4	7 3/8	12 7/8	2 1/8	12	4 1/4	3/8							
		2		13 3/4	11 3/4															
3x2x12	824-S	3	36	40	19	38	4	8	15 3/4	2	15	6	1/2							
		3		17 1/4	15 3/4															
4x3x12	824-S	4	36	40	19	38	4	8	18	1 1/8	16 1/4	6	1/2							
		4		18	16 1/4															

FRAME	P	Q
56 C	10 7/16	12
143 TC	10	12
145 TC	10 7/16	12
182 - 184 TC	13 1/2	12
213 TC	15 1/2	12
215 TC	17	12
254 TC	20 1/8	12
256 TC	21 7/8	12
284 TC	22 3/8	13
286 TC	23 7/8	13
324 TC	24 3/4	13 1/2
326 TC	26 1/8	13 1/2
364 TC	26 1/2	16 5/8
365 TC	27 1/2	16 5/8

MOTOR DATA

"K" dimension shown is for a pump built for a 2' through 6' pit depth. For each additional column section, subtract 3/8" from "K."

Not for construction unless certified, some dimensions may vary ± 1/2". Pump Construction: _____

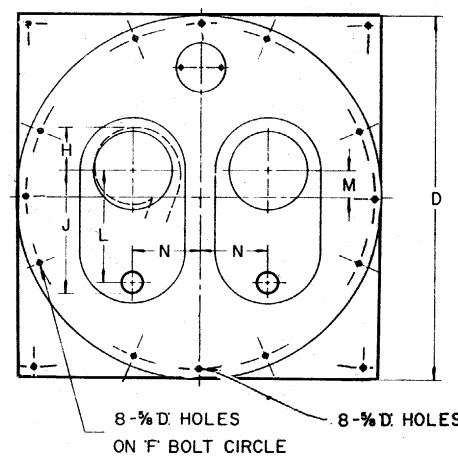
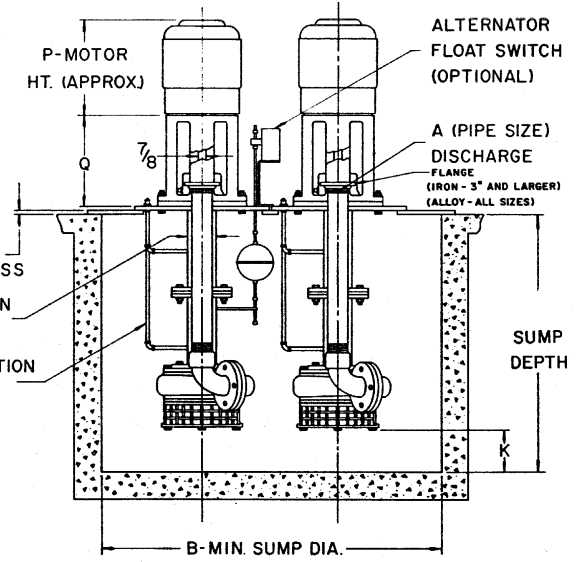
CUSTOMER _____ CUSTOMER NO. _____
 PROJECT _____ SERIAL NO. _____
 ENGINEER _____ LOCATION _____
 CONTRACTOR _____
 PUMP Model Size Curve No. GPM Head SP. GR. @Temp. Pump Length Plate
 DATA _____
 MOTOR Mfgr. HP RPM Volt-Phase-Cycle Frame ENC. Furnished by Mounted by
 DATA _____
 Shop Order _____ Certified by _____ Date _____

VERTIFLO PUMP COMPANY Dimensions

800-S Duplex Sump Pump

PUMP DATA

SIZE	MODEL	A	B	C	D	F	G	H	J	K ⁽²⁾	L	M	N
3x2½x7	820-S	2½/3	48	2' TO 20' IN 1' INCREMENTS	54	51	4	5½	13½/14½	27/12	11½/12	8¾	10½
1½x1x8	820-S	1½	48		54	51	4	5¾	10½/11½	4½/9¾	9½/9¾	8¾	10½
1½x1¼x8	820-S	1½/2	48		54	51	4	5¾	11½/12	3½/10¾	10/10¾	8¾	10½
2x1½x8	820-S	1½/2	48		54	51	4	5¾	11½/12	3¾/10¾	10/10¾	8¾	10½
3x2x8	820-S	2/2½	48		54	51	4	5¾	12½/13¾	3¾/11½	11½/11½	8¾	10½
4x3x8	820-S	3/4	48		54	51	4	6	15½/16¾	1½/13¾	13¾/13¾	8¾	10½
5x4x8	820-S	4/5	54		60	57	4	7	17½/18¾	1½/15	14½/15	8½	11
2x1½x10	820-S	1½/2	48		54	51	4	6½	12½/13	5/11½	11¼/11½	8¾	10½
3x2x10	820-S	2/2½	48		54	51	4	6½	13½/14½	5/12¾	12¾/12¾	8¾	10½
4x3x10	820-S	3/4	54		60	57	4	6¾	17/18	2¾/15¼	14¾/15¼	11½	11
5x4x10	824-S	4/5	54		60	57	4	7¾	19¼/20¾	1½/17	16½/17	13	11
6x5x10	824-S	5/6	60		66	63	4	8	20¾/21¾	1½/18	17½/18	13	12½
6x6x10	824-S	6/8	60		66	63	4	9½	22½/25	7/8	18½/19¾	12½	12½
2x1½x12	824-S	1½/2	48		54	51	4	7¾	12½/13½	2½/12	11½/12	8¾	10½
3x2x12	824-S	2/3	54		60	57	4	8	15¾/17½	2½/15	14¼/15	12	11
4x3x12	824-S	3/4	54		60	57	4	8	18/19	2½/16¾	15¾/16¾	12	11



MOTOR DATA

FRAME	P	Q	FRAME	P	Q
56 C	10⅞	12	256 TC	21⅞	12
143 TC	10	12	284 TC	22¾	13
145 TC	10⅞	12	286 TC	23⅞	13
182 - 184 TC	13½	12	324 TC	24¾	13½
213 TC	15½	12	326 TC	26⅞	13½
215 TC	17	12	364 TC	26½	16¾
254 TC	20⅞	12	365 TC	27½	16¾

"K" dimension shown is for a pump built for a 2' through 6' pit depth. For each additional column section, subtract 3/8" from "K."

Not for construction unless certified, some dimensions may vary ± 1/2". Pump Construction: _____

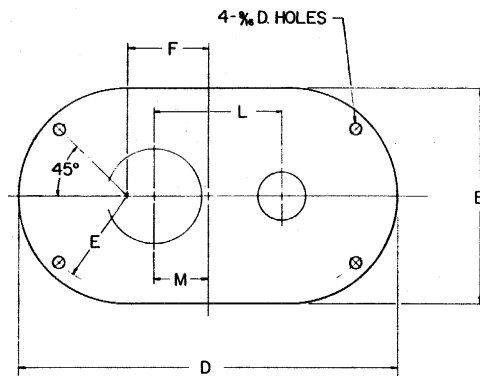
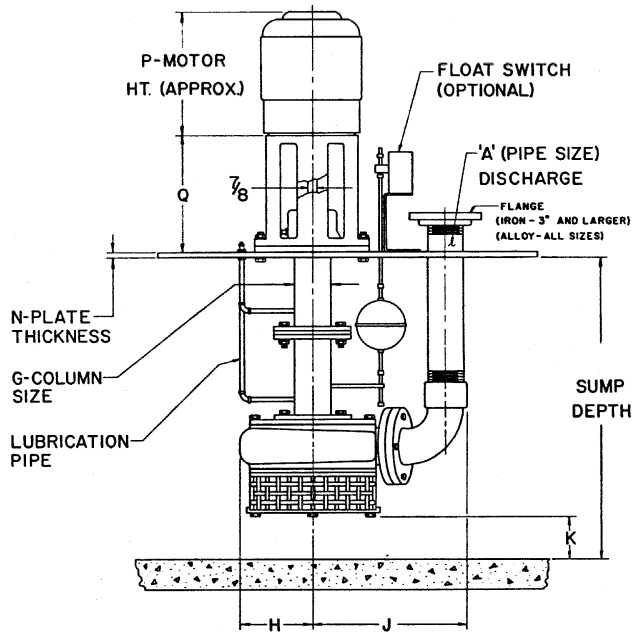
CUSTOMER _____ CUSTOMER NO. _____
 PROJECT _____ SERIAL NO. _____
 ENGINEER _____ LOCATION _____
 CONTRACTOR _____
 PUMP Model _____ Size _____ Curve No. _____ GPM _____ Head _____ SP. GR. @ Temp. _____ Pump Length _____ Plate DATA _____
 MOTOR Mfg. _____ HP _____ RPM _____ Volt-Phase-Cycle _____ Frame ENC. _____ Furnished by _____ Mounted by DATA _____
 Shop Order _____ Certified by _____ Date _____

VERTIFLO PUMP COMPANY Dimensions

800-S Basic Sump Pump

PUMP DATA

SIZE	MODEL	A	B	C	D	E	F	G	H	J	K ⁽²⁾	L	M	N
3x2 1/2 x 7	820-S	2 1/2 3	18	2' TO 20' IN 1' INCREMENTS	26	8	4	4	5 1/2	13 1/2 14 1/2	2 7/8	11 1/8 12	4 3/4	3 3/8
1 1/2 x 1 x 8	820-S	1 1 1/2	18		26	8	4	4	5 3/4	10 5/8 11 1/8	4 1/8	9 5/8 9 7/8	4 3/4	3 3/8
1 1/2 x 1 1/4 x 8	820-S	1 1/2 2	18		26	8	4	4	5 3/4	11 3/8 12	3 1/2	10 10 3/8	4 3/4	3 3/8
2 x 1 1/2 x 8	820-S	1 1/2 2	18		26	8	4	4	5 3/4	11 3/8 12	3 3/4	10 10 3/8	4 3/4	3 3/8
3 x 2 x 8	820-S	2 2 1/2	18		26	8	4	4	5 3/4	12 3/8 13 3/8	3 3/8	11 1/8 11 1/2	4 3/4	3 3/8
4 x 3 x 8	820-S	3 4	18		26	8	4	4	6	15 5/8 16 3/8	1 1/2	13 3/8 13 7/8	5 3/4	3 3/8
5 x 4 x 8	820-S	4 5	21		30	9 1/2	4 1/2	4	7	17 1/8 17 3/8	1 1/8	14 1/2 15	6 1/2	3 3/8
2 x 1 1/2 x 10	820-S	1 1/2 2	18		26	8	4	4	6 1/2	12 1/2 13	5	11 1/4 11 1/2	4 3/4	3 3/8
3 x 2 x 10	820-S	2 2 1/2	18		26	8	4	4	6 3/8	13 3/4 14 1/2	5	12 3/8 12 3/8	4 3/4	3 3/8
4 x 3 x 10	820-S	3 4	21		30	9 1/2	4 1/2	4	7	17 1/8 18	2 3/4	14 7/8 15 1/4	6 1/2	3 3/8
5 x 4 x 10	824-S	4 5	24		34	9 1/2	6 1/2	4	7 3/8	19 1/4 20 3/8	1 1/8	16 1/2 17	7	1 1/2
6 x 5 x 10 6 x 5 x 10A	824-S	5 6	21		34	9 1/2	6 1/2	4	8	20 7/8 21 7/8	1 1/8	17 1/2 18	7	1 1/2
6 x 6 x 10 6 x 6 x 10A	824-S	6 8	24		39	11	7 1/2	4	9 1/2	22 1/2 25	7/8	18 1/2 19 3/8	8	1 1/2
2 x 1 1/2 x 12	824-S	1 1/2 2	20		26	9	3	4	7 3/8	12 7/8 13 1/2	2 1/8	11 3/8 12	4 1/4	3 3/8
3 x 2 x 12	824-S	2 3	21		34	9 1/2	6 1/2	4	8	15 3/4 17 1/4	2	14 1/4 15	6	1 1/2
4 x 3 x 12	824-S	3 4	21		34	9 1/2	6 1/2	4	8	18 19	1 3/8	15 3/4 16 1/4	6	1 1/2



"K" dimension shown is for a pump built for a 2' through 6' pit depth. For each additional column section, subtract 3/8" from "K."

MOTOR DATA

FRAME	P	Q
56 C	10 7/16	12
143 TC	10	12
145 TC	10 7/16	12
182 - 184 TC	13 1/2	12
213 TC	15 1/2	12
215 TC	17	12
254 TC	20 1/8	12

FRAME	P	Q
256 TC	21 1/8	12
284 TC	22 3/8	13
286 TC	23 3/8	13
324 TC	24 3/4	13 1/2
326 TC	26 1/8	13 1/2
364 TC	26 1/2	16 5/8
365 TC	27 1/2	16 5/8

Not for construction unless certified, some dimensions may vary $\pm 1/2"$. Pump Construction: _____

CUSTOMER _____ CUSTOMER NO. _____
 PROJECT _____ SERIAL NO. _____
 ENGINEER _____ LOCATION _____
 CONTRACTOR _____
 PUMP Model Size Curve No. GPM Head SP. GR. @Temp. Pump Length Plate
 DATA _____
 MOTOR Mfr. HP RPM Volt-Phase-Cycle Frame ENC. Furnished by Mounted by
 DATA _____
 Shop Order _____ Certified by _____ Date _____

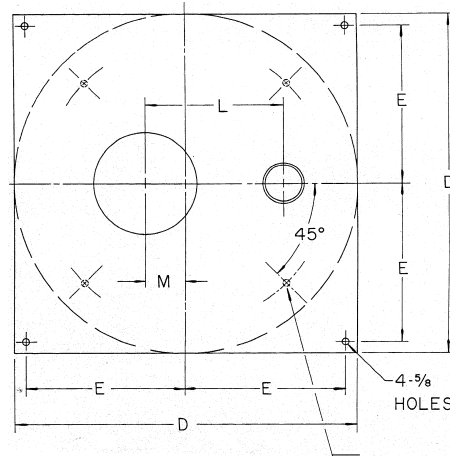
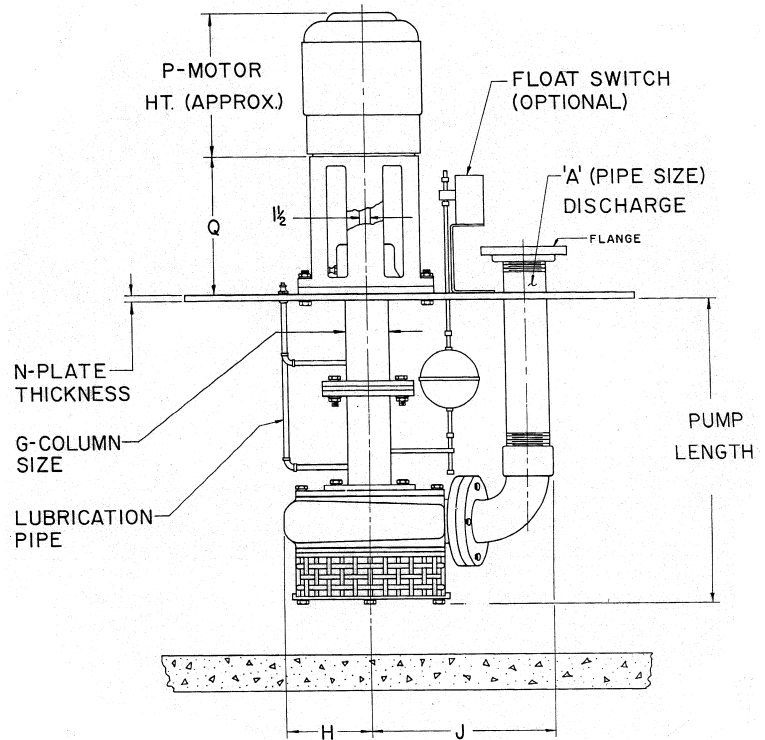
832 Simplex Sump Pump

PUMP DATA

SIZE	MDL	A	B	D	E	F	G	H	J	L	M	N
6x4x12	832	4							19 ³ / ₄	17		
		5	36	40	19	38	6	9	20 ⁷ / ₈	17 ¹ / ₂	6 ⁷ / ₈	1/2
		6							22	18		
6x6x12	832	6	36	40	19	38	6	9 ¹ / ₂	22 ³ / ₄	18 ³ / ₄	7 ¹ / ₈	1/2
		8	40	54	26	52	6	9 ¹ / ₂	25 ¹ / ₄	19 ⁷ / ₈		
8x8x12	832	8	40	54	26	52	6	12 ¹ / ₂	28 ³ / ₈	23	8 ¹ / ₂	1/2
		10							30 ³ / ₈	24 ¹ / ₈		

MOTOR DATA

FRAME	P	Q
56 C	12 ¹ / ₈	12
143 - 145 TC	12 ¹ / ₄	12
182 - 184 TC	15 ⁷ / ₁₆	12
213 - 215 TC	16 ¹ / ₁₆	14 ¹ / ₄
254 - 256 TC	20	14 ¹ / ₄
284 - 286 TC	20 ¹ / ₈	14 ⁵ / ₈
324 - 326 TSC	25	16 ⁵ / ₈
364 - 365 TSC	25 ¹ / ₄	16 ⁵ / ₈
404 - 405 TSC	28	18 ⁵ / ₈



Not for construction unless certified, some dimensions may vary $\pm 1/2"$. Pump Construction: _____

CUSTOMER _____ CUSTOMER NO. _____
 PROJECT _____ SERIAL NO. _____
 ENGINEER _____ LOCATION _____
 CONTRACTOR _____
 PUMP Model Size Curve No. GPM Head SP. GR. @Temp. Pump Length Plate
 DATA _____
 MOTOR Mfg. HP RPM Volt-Phase-Cycle Frame ENC. Furnished by Mounted by
 DATA _____
 Shop Order _____ Certified by _____ Date _____